

**SPLIT TYPE
AIR CONDITIONER
CASSETTE type (50Hz)**

**SERVICE
MANUAL**



Models

Indoor unit	Outdoor unit
AUY25FUAR	AOY25FNAKL
AUY25FUAR	AOY25FNANL
AUY25UUAR	AOY25UNAKL
AUY25UUAR	AOY25UNANL

CONTENTS

SPECIFICATIONS	1
OUTLINE AND DIMENSIONS	2
REFRIGERANT SYSTEM DIAGRAM.....	4
CIRCUIT DIAGRAM	5
INDOOR PCB CIRCUIT DIAGRAM	7
OUTDOOR PCB CIRCUIT DIAGRAM.....	9
ERROR CONTENTS	10
DISASSEMBLY ILLUSTRATION	11
PARTS LIST.....	19
ACCESSORIES	22

SPECIFICATIONS

TYPE	COOLING	COOLING & HEATING
INDOOR UNIT	AUY25FUAR	AUY25UUAR
OUTDOOR UNIT	AOY25FNAKL AOY25FNANL	AOY25UNAKL AOY25UNANL
COOLING CAPACITY	7.05 kW	7.00 kW
HEATING CAPACITY	-----	7.80 kW

ELECTRICAL DATA

POWER SOURCE		230 V	
FREQUENCY		50 Hz	
RUNNING CURRENT	COOLING	11.5 A	11.8 A
	HEATING	-----	10.5 A
INPUT WATTS	COOLING	2.60 kW	2.65 kW
	HEATING	-----	2.35 kW
E.E.R.	COOLING	2.71 kW / kW	2.64 kW / kW
	HEATING	-----	3.32 kW / kW
STARTING CURRENT		60 A	
MOISTURE REMOVAL		2.5 L/hr	

COMPRESSOR

TYPE		Hermetic type, 2 pole, Single phase, Induction motor, Rotary	
DISCRIMINATION		5JS290DAA	
REFRIGERANT	R410A	1,550 g	2,000 g
FAN SPEED (r.p.m.)	INDOOR	HIGH	490 r.p.m.
		MED	430 r.p.m.
		LOW	360 r.p.m.
	OUTDOOR	780 r.p.m.	
AIR FLOW	INDOOR	1,100 m ³ /h	
	OUTDOOR	3,200 m ³ /h	
DIMENSIONS H x W x D	INDOOR	246 x 830 x 830 mm	
	GRILLE	35 x 940 x 940 mm	
	OUTDOOR	650 x 830 x 320 mm	
WEIGHT NET / GROSS	INDOOR	34 kg / 44 kg	
	OUTDOOR	58 kg / 62 kg	59 kg / 63 kg
MAX PIPE LENGTH / HEIGHT		25 m / 15 m	
REMOTE CONTROLLER TYPE		WIRED	

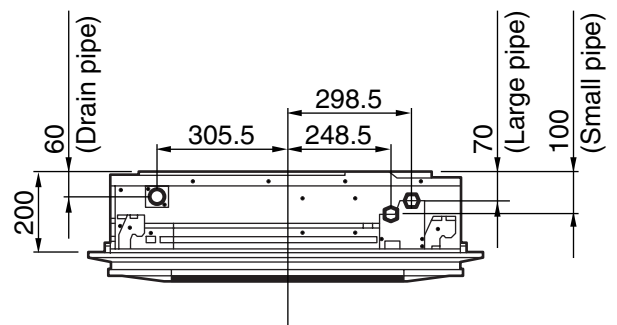
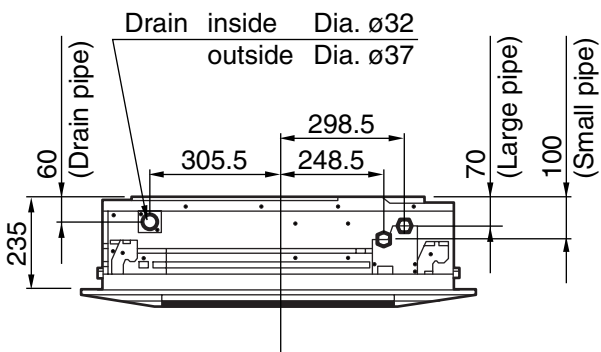
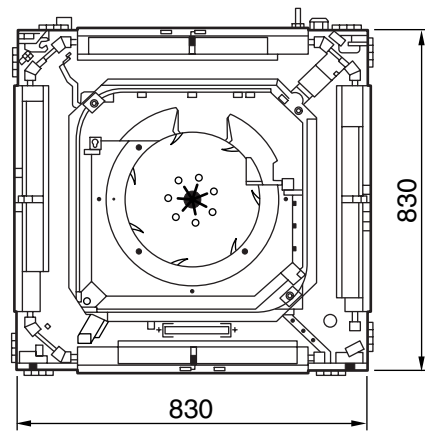
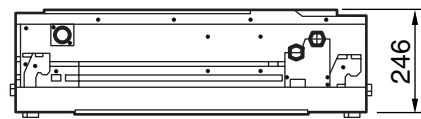
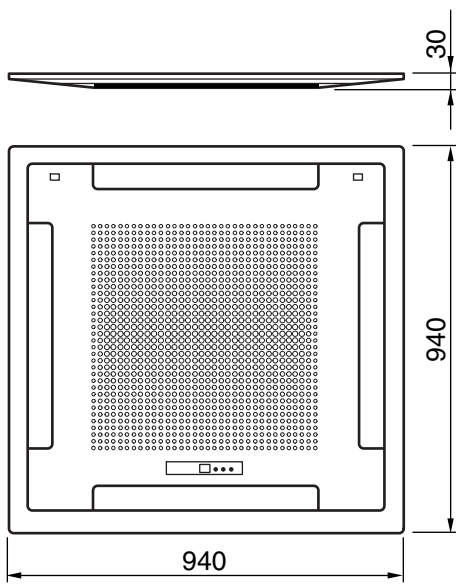
ADDITIONAL REFRIGERANT CHARGE (R410A)

FULL CHARGE AMOUNT	PIPE LENGTH	7.5 m (24 ft.)	1,550 g (54.7 oz)	2,000 g (70.6 oz)
		10 m (33 ft.)	1,600 g (56.4 oz)	2,100 g (74.1 oz)
		15 m (49 ft.)	1,700 g (60.0 oz)	2,300 g (81.1 oz)
		20 m (66 ft.)	1,800 g (63.5 oz)	2,500 g (88.2 oz)
		25 m (82 ft.)	1,900 g (67.0 oz)	2,700 g (95.2 oz)
ADDITIONAL CHARGE			20 g / m (0.7 oz / 3.3 ft.)	40 g / m (1.4 oz / 3.3 ft.)

OUTLINE AND DIMENSIONS

Unit : (mm)

Models : AUY25FUAR, AUY25UUAR



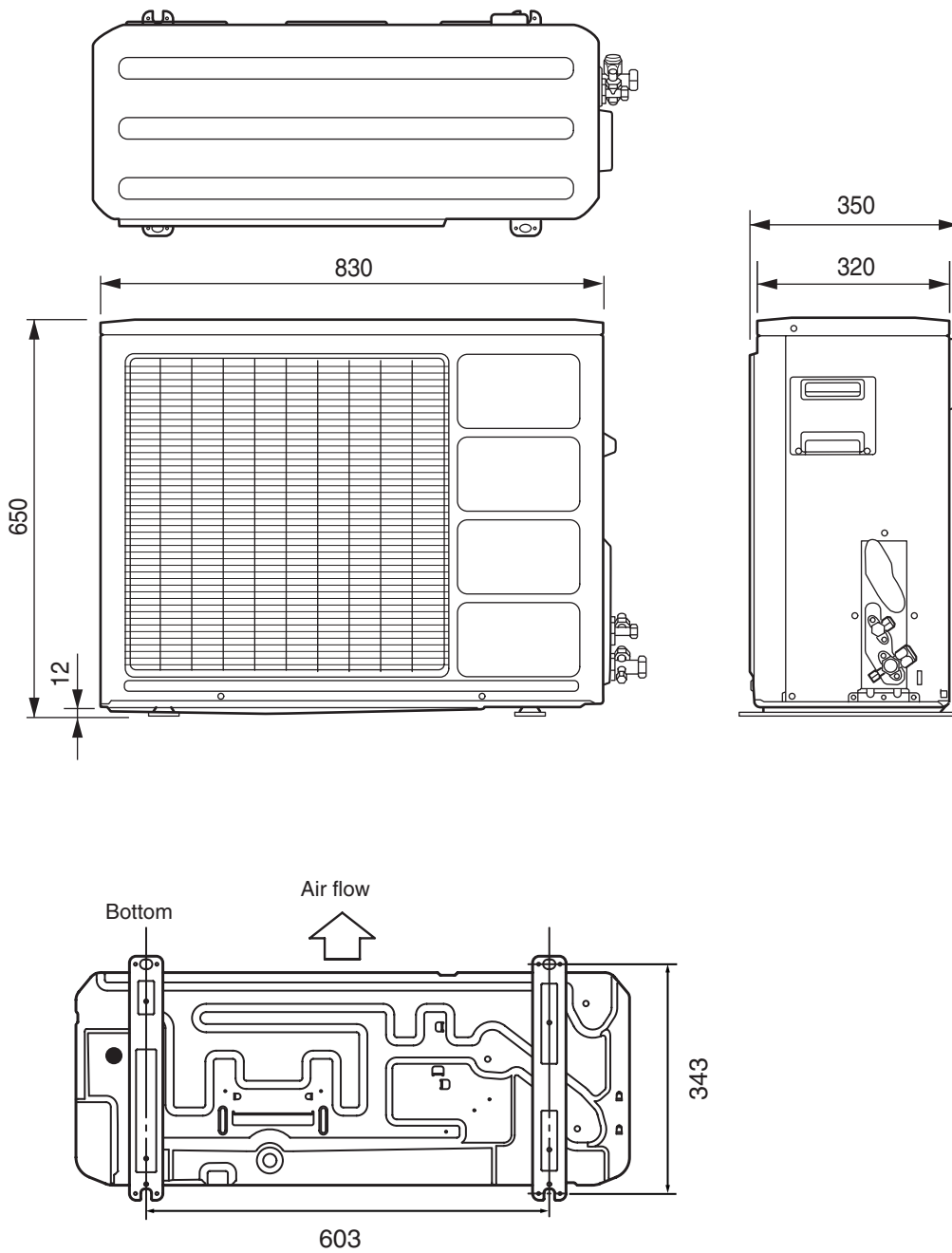
OUTDOOR UNIT

Unit : mm

Models :

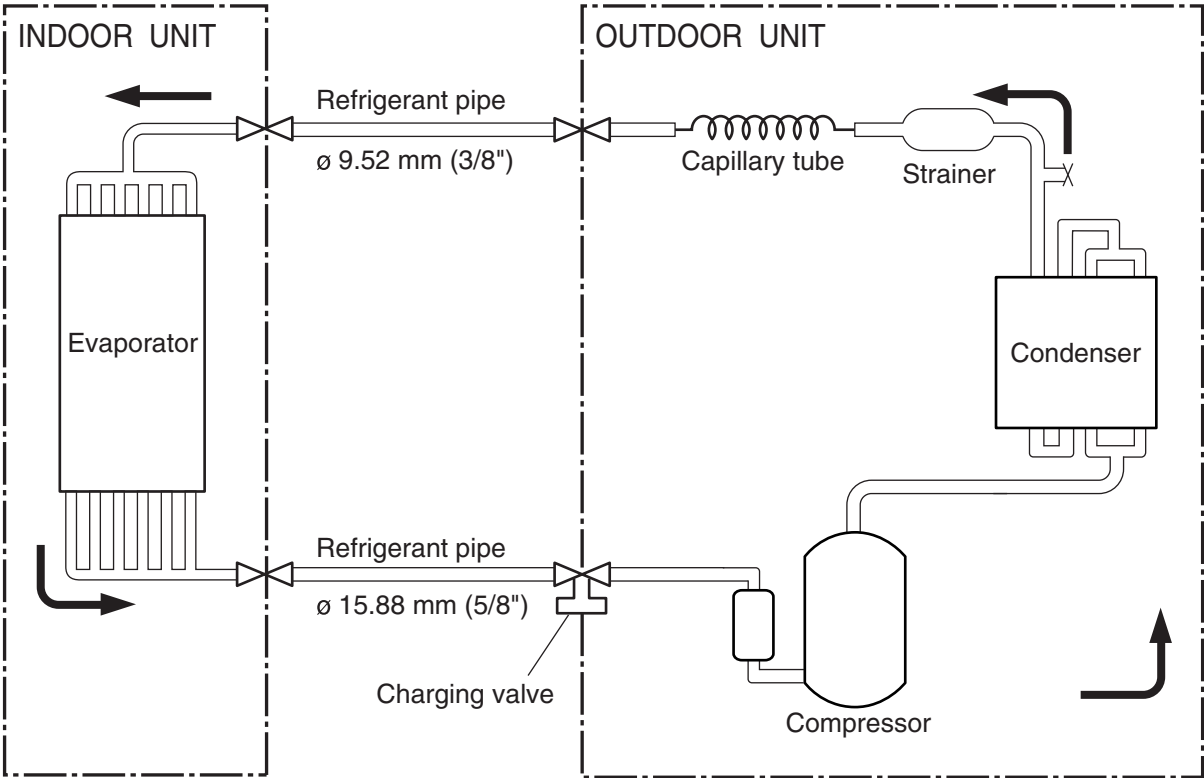
AOY25FNAKL, AOY25UNAKL

AOY25FNANL, AOY25UNANL

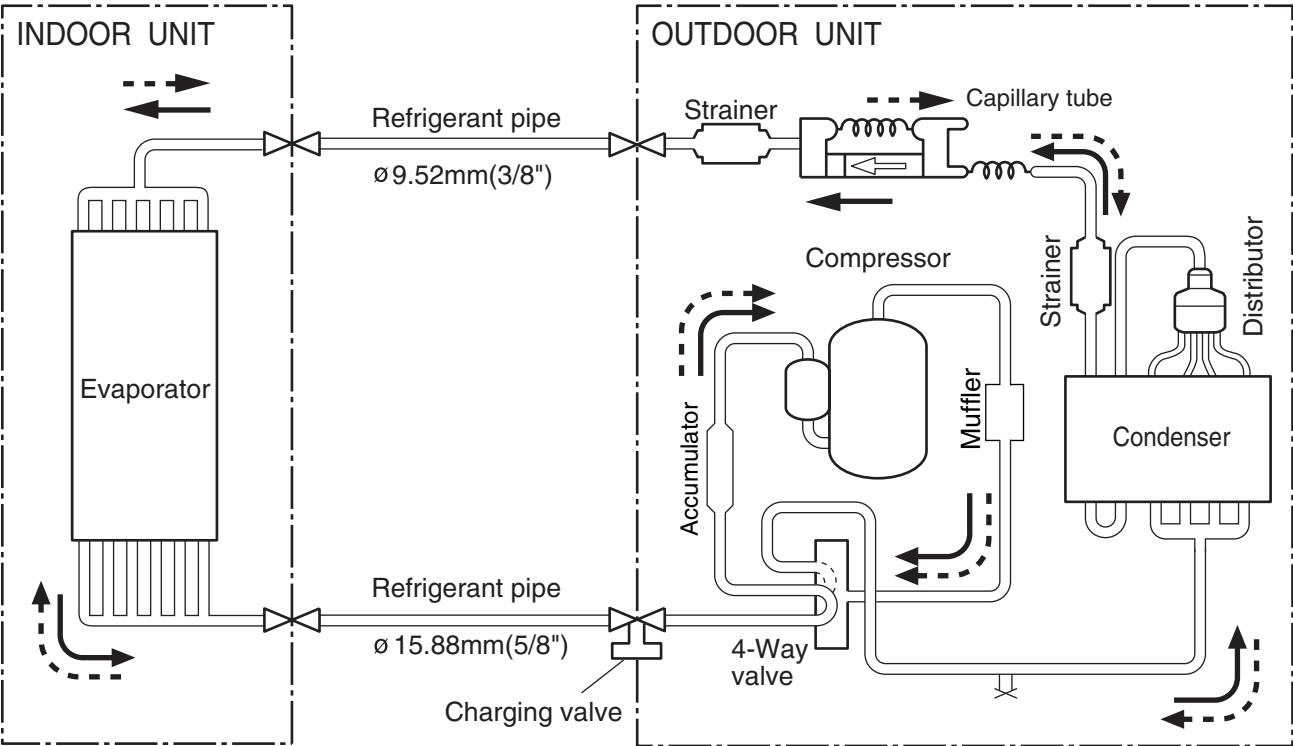


REFRIGERANT SYSTEM DIAGRAM

Models :
 AUJ25FUAR / AOJ25FNAKL
 AUJ25FUAR / AOJ25FNANL



Models :
 AUJ25UJAR / AOJ25UNAKL
 AUJ25UJAR / AOJ25UNANL



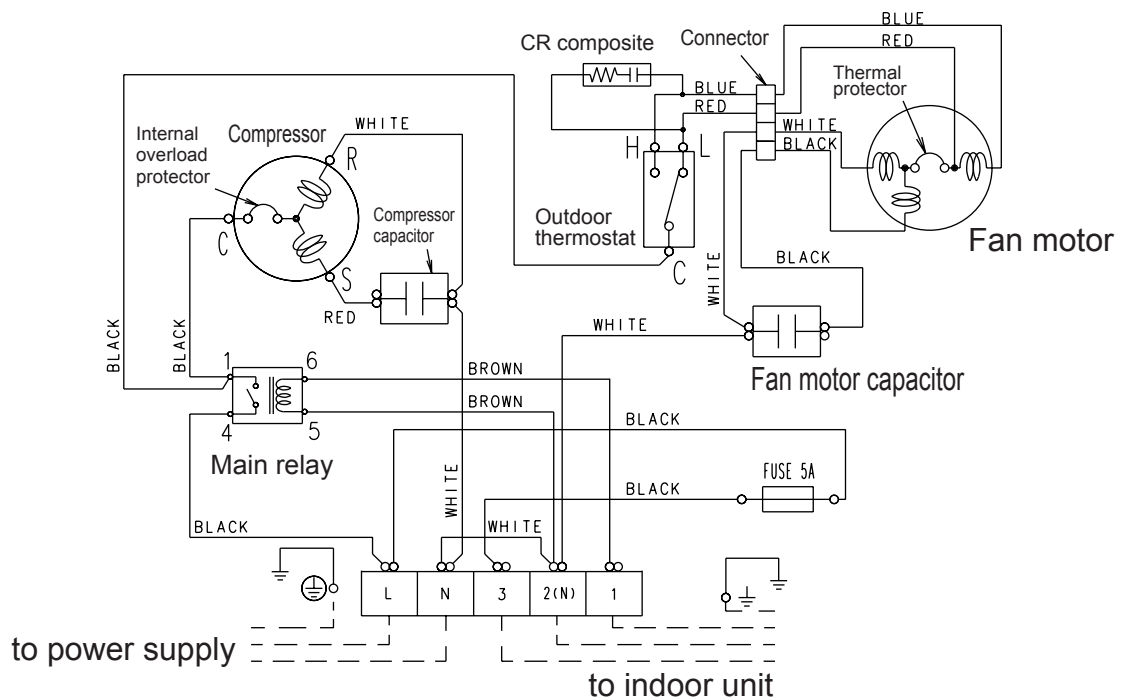
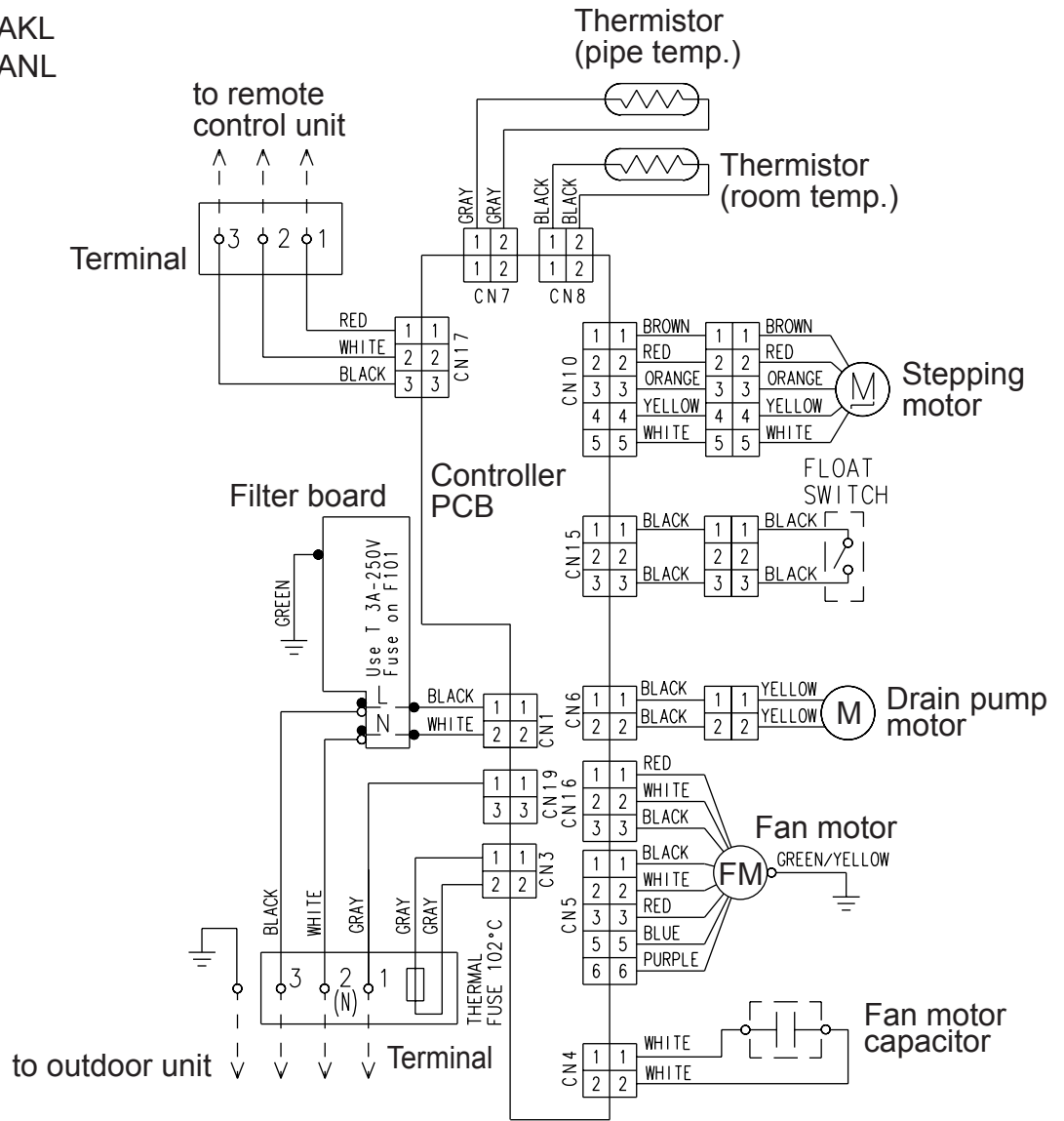
Cooling
 Heating
 : Flare coupling

CIRCUIT DIAGRAM

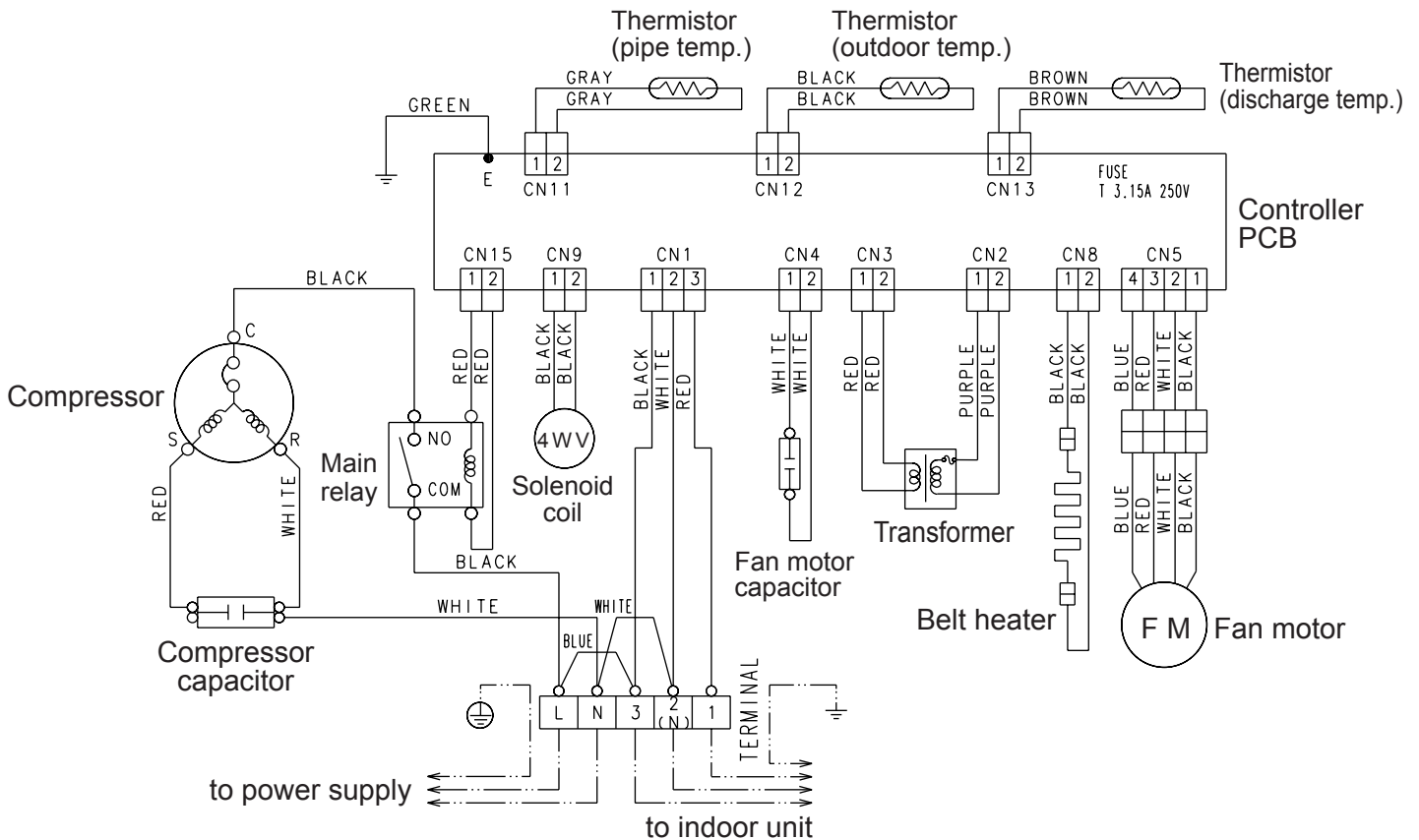
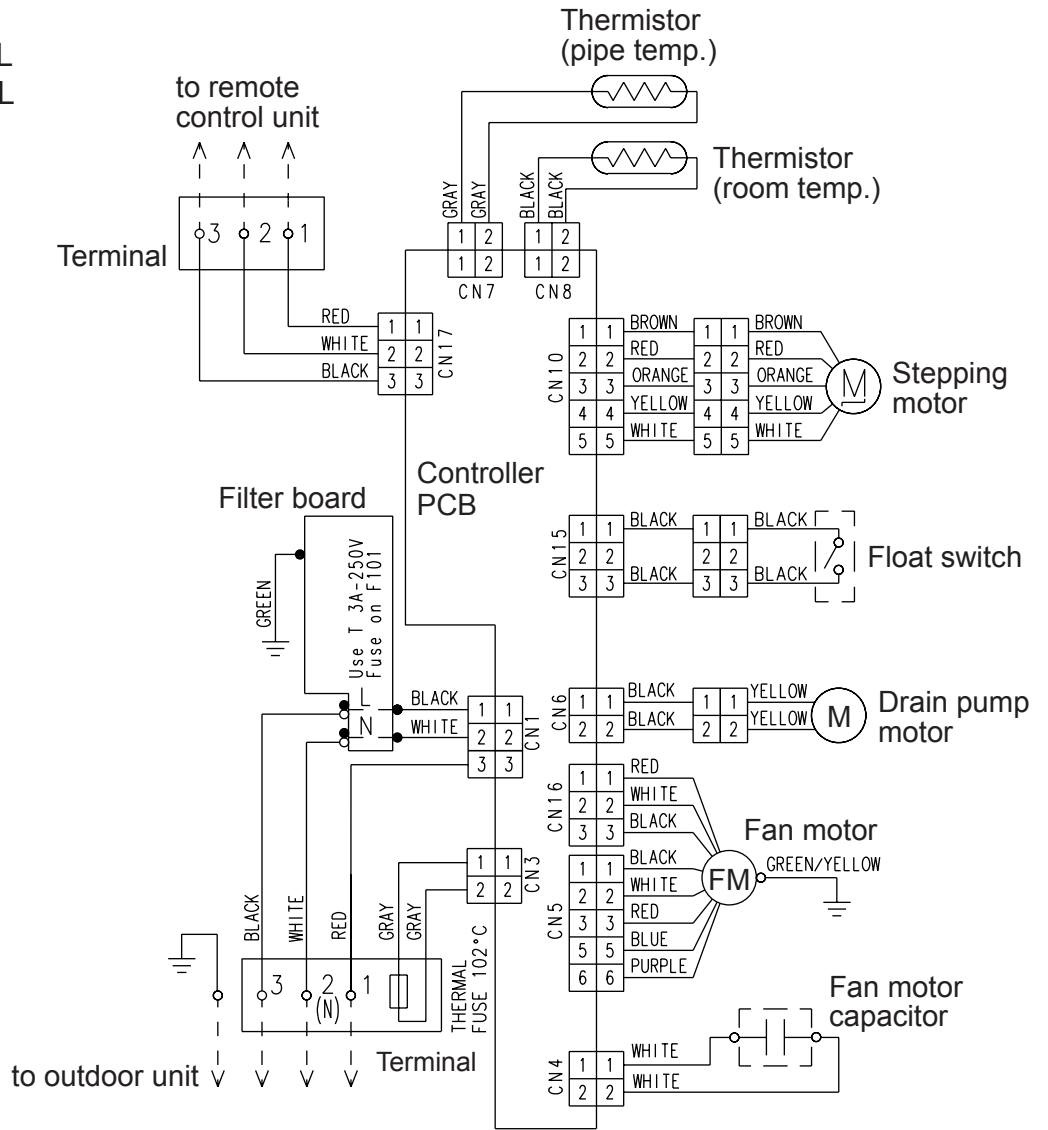
Models :

AUY25FUAR / AOY25FNAKL

AUY25FUAR / AOY25FNANL



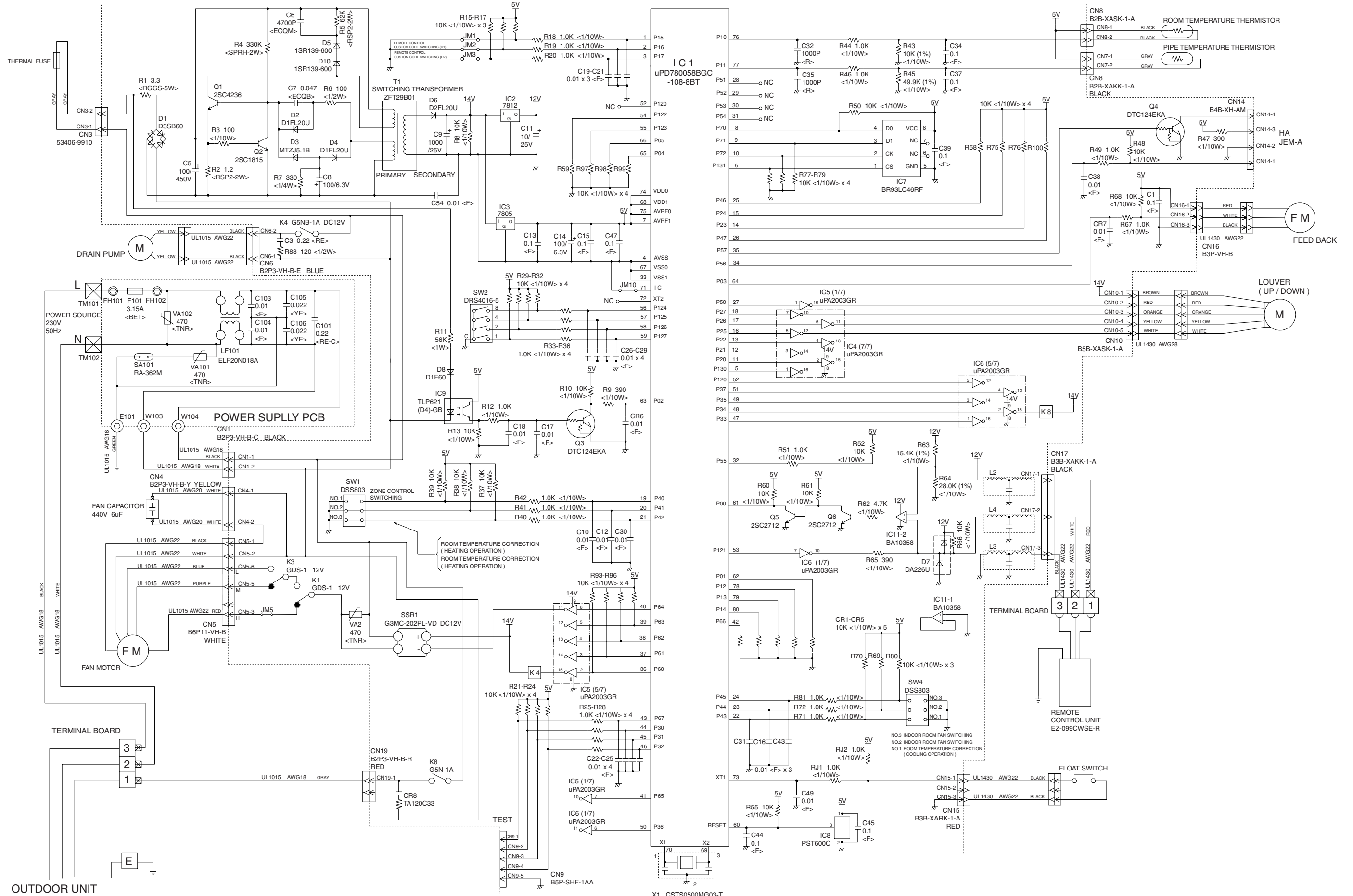
Model :
 AUY25UUAR / AOY25UNAKL
 AUY25UUAR / AOY25UNANL

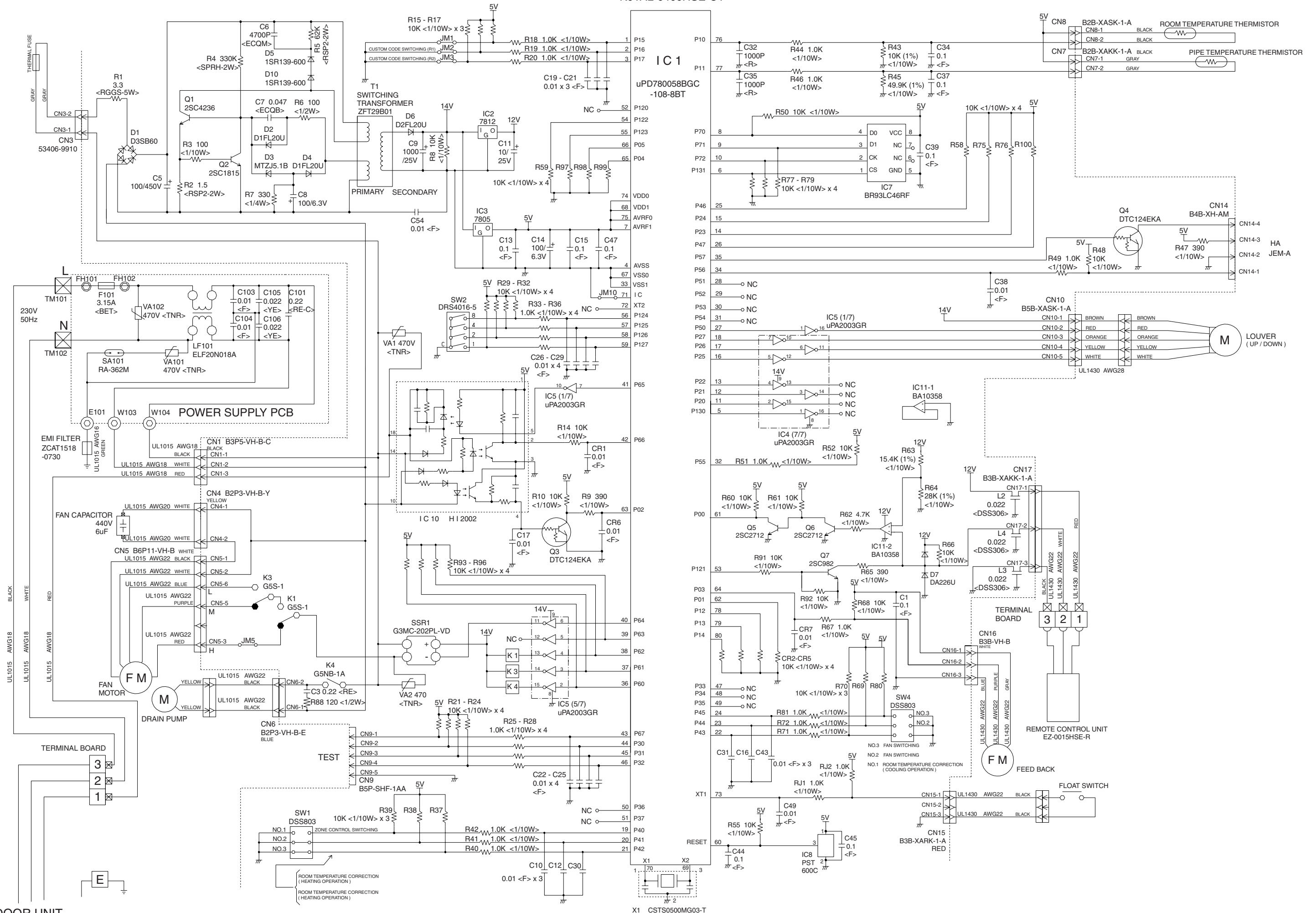


INDOOR PCB CIRCUIT DIAGRAM

Model : AU25FUAR

CONTROLLER PCB ASSEMBLY (MAIN PCB) K01AL-0401WSE-C



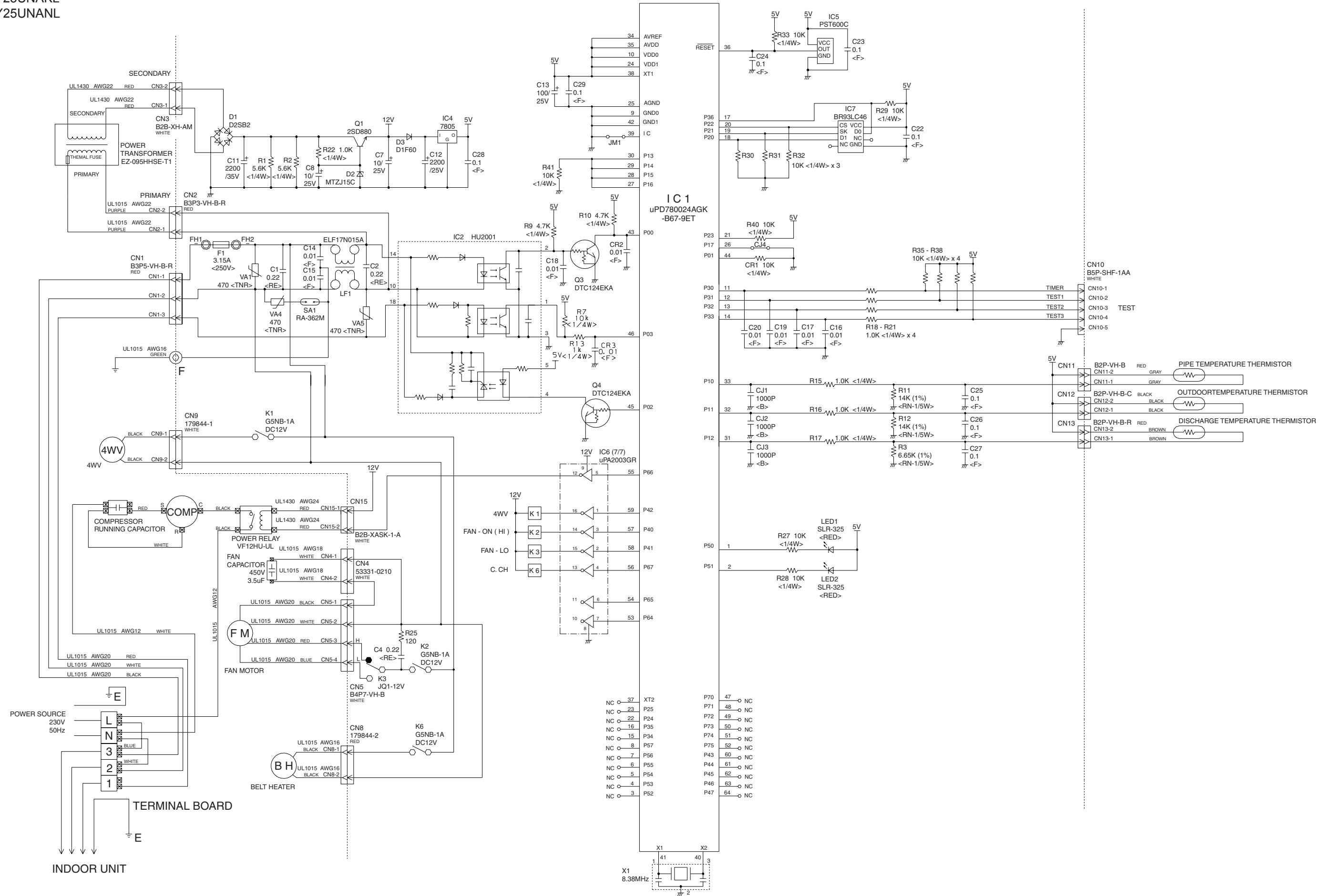


OUTDOOR UNIT

OUTDOOR PCB CIRCUIT DIAGRAM

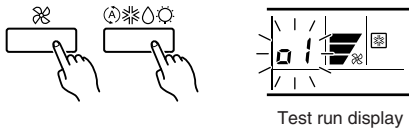
Models :
AOY25UNAKL
AOY25UNANL

CONTROLLER PCB ASSEMBLY (MAIN PCB) K01DI-0400HUE-C1



ERROR CONTENTS

- Stop the air conditioner operation.
- Press the master control button and the fan control button simultaneously for 2 seconds or more to start the test run.



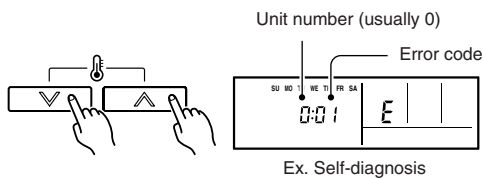
- Press the start/stop button to stop the test run.

[SELF-DIAGNOSIS]

When the error indication E:EE is displayed, follow the following items to perform the self-diagnosis. E:EE indicates an error has occurred.

1. REMOTE CONTROLLER DISPLAY

- Stop the air conditioner operation.
- Press the set temperature buttons \wedge / \vee simultaneously for 5 seconds or more to start the self-diagnosis. Refer to the following tables for the description of each error code.



- Press the set temperature buttons \wedge / \vee simultaneously for 5 seconds or more to stop the self-diagnosis.

Error code	Error contents
00	Communication error (indoor unit ↔ remote controller)
01	Communication error (indoor unit ↔ outdoor unit)
02	Room temperature sensor open
03	Room temperature sensor short-circuited
04	Indoor heat exchanger temperature sensor open
05	Indoor heat exchanger temperature sensor short-circuited
06	Outdoor heat exchanger temperature sensor open
07	Outdoor heat exchanger temperature sensor short-circuited
08	Power source connection error
09	Float switch operated
0A	Outdoor temperature sensor open
0b	Outdoor temperature sensor short-circuited
0c	Discharge pipe temperature sensor open
0d	Discharge pipe temperature sensor short-circuited
0E	Outdoor high pressure abnormal
0F	Discharge pipe temperature abnormal
11	Model abnormal
12	Indoor fan abnormal
13	Outdoor signal abnormal
14	Outdoor EEPROM abnormal

2. OUTDOOR UNIT LEDS

When the outdoor temperature drops, the outdoor units fans may switch to low speed.

ERROR : HEAT & COOL MODEL (REVERSE CYCLE) ONLY

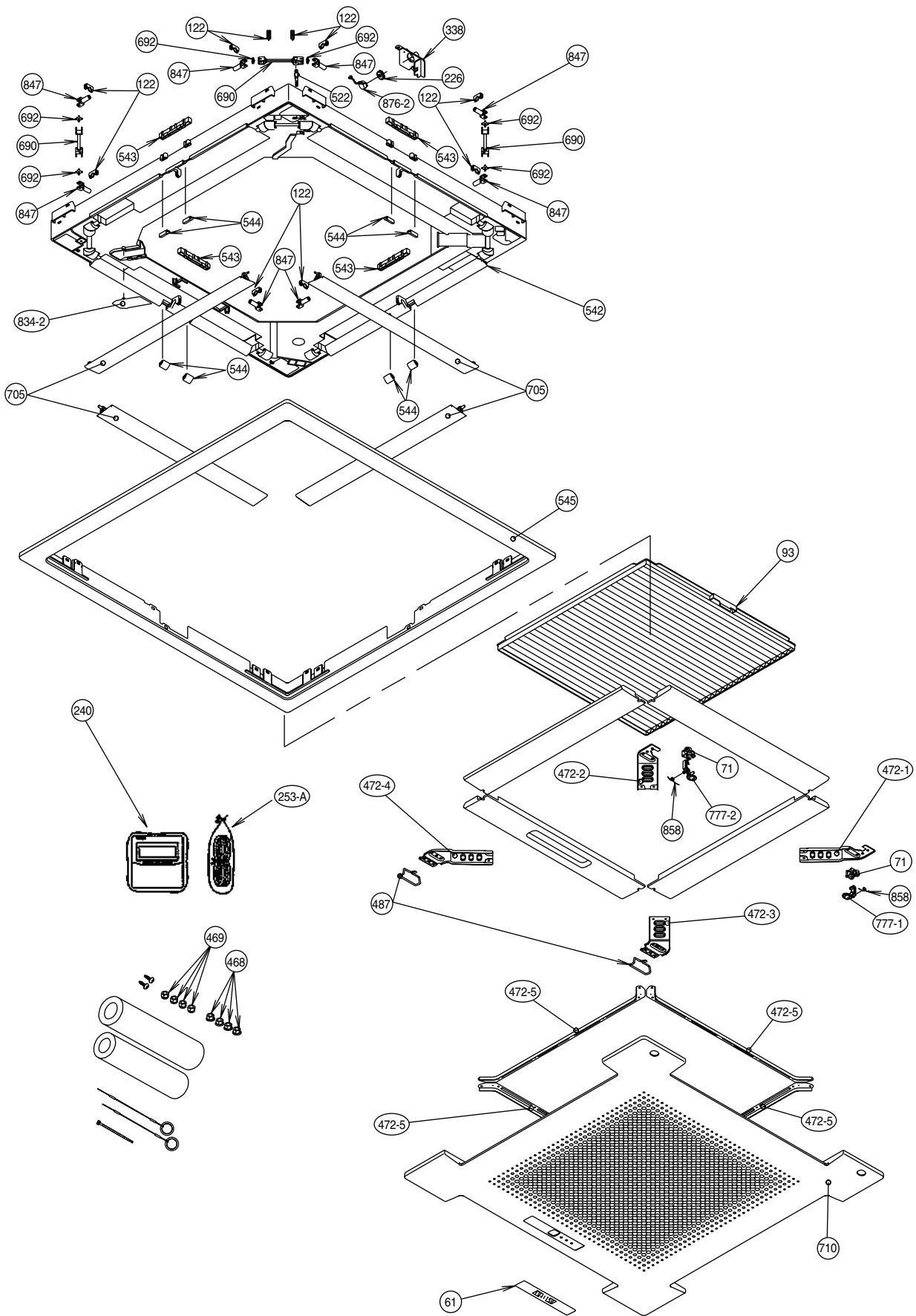
The LED lamps operate as follows according to the error contents.

Error display		Error contents
LED1	LED2	
<p>Quick flash continued</p>	<p>Quick flash continued</p>	Model abnormal or EEPROM abnormal
<p>1 quick flash repeated</p>	<p>Lighting continued</p>	Power source connection error
<p>2 quick flash repeated</p>	<p>Lighting continued</p>	Discharge temperature sensor error
<p>3 quick flash repeated</p>	<p>Lighting continued</p>	Outdoor heat exchanger temperature sensor error
<p>4 quick flash repeated</p>	<p>Lighting continued</p>	Outdoor temperature sensor error
<p>5 quick flash repeated</p>	<p>Lighting continued</p>	Communication signal error
<p>6 quick flash repeated</p>	<p>Lighting continued</p>	Indoor unit error
<p>7 quick flash repeated</p>	<p>Lighting continued</p>	Discharge temperature abnormal
<p>8 quick flash repeated</p>	<p>Lighting continued</p>	High pressure abnormal

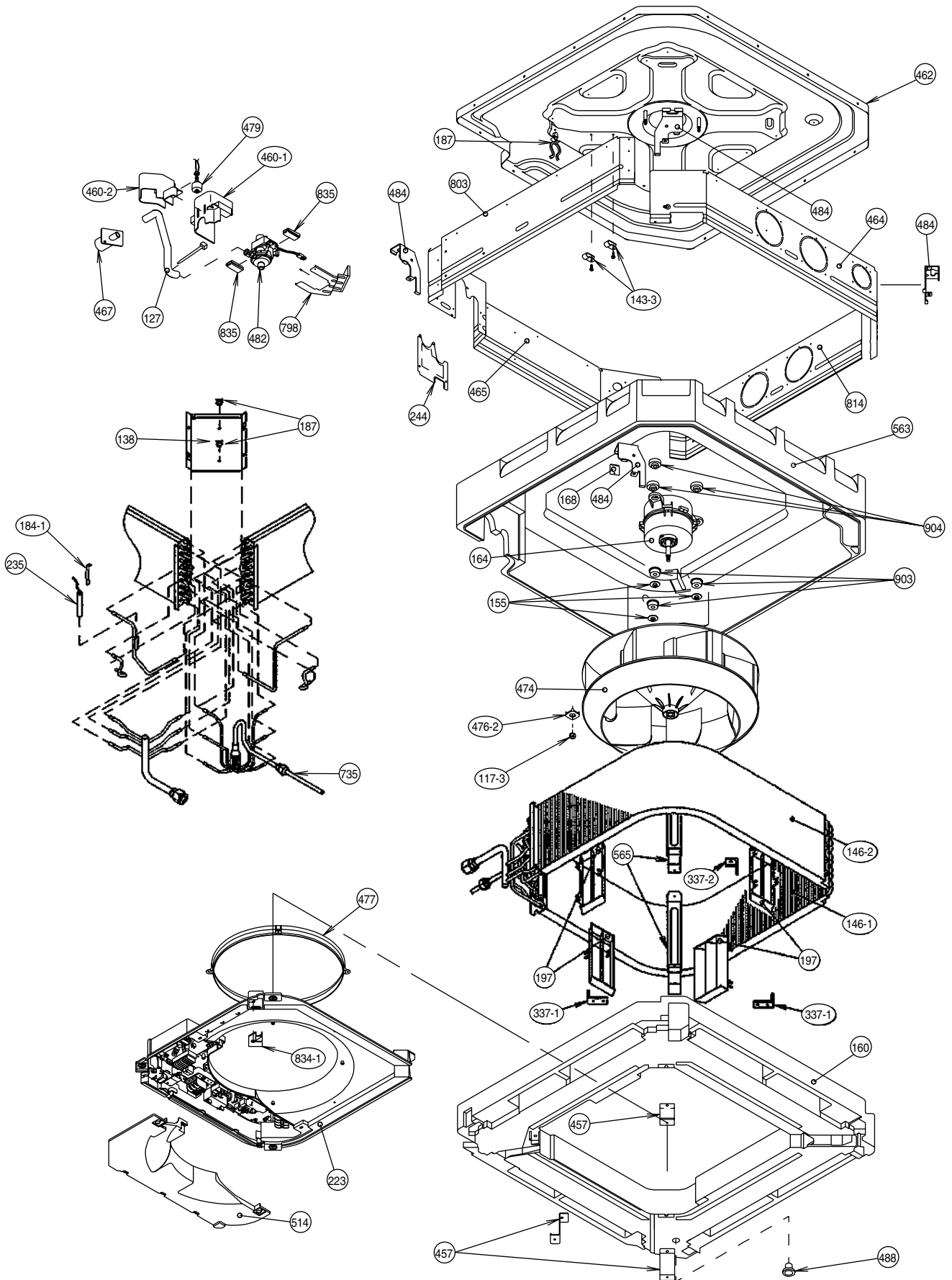
When the fault is cleared, the LED lamp goes off. However, for discharge pipe temperature abnormal and high pressure abnormal, the LED lamp lights continuously for 24 hours, as long as the power is not turned off.

DISASSEMBLY ILLUSTRATION

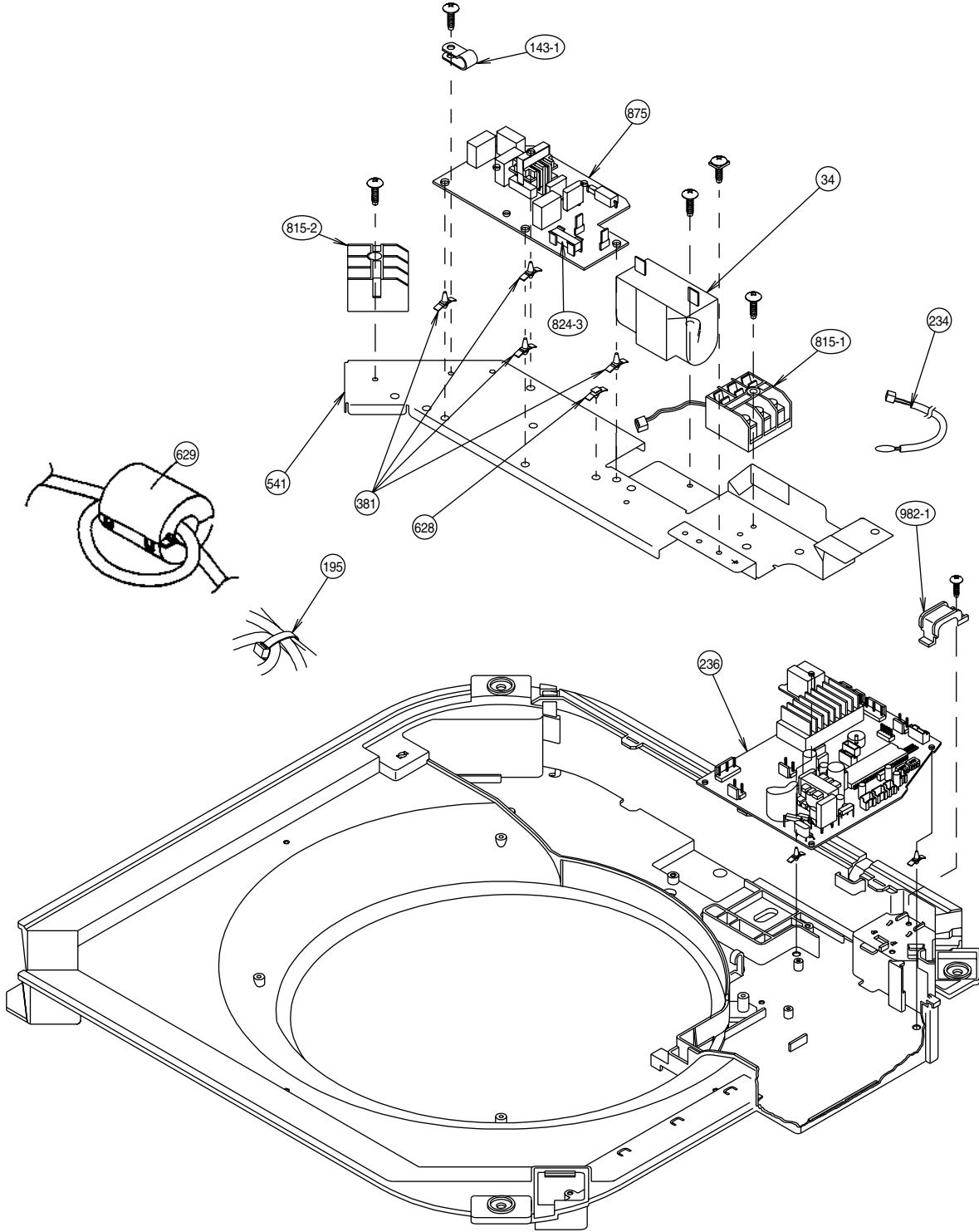
Models :
AUY25FUAR
AUY25UUAR



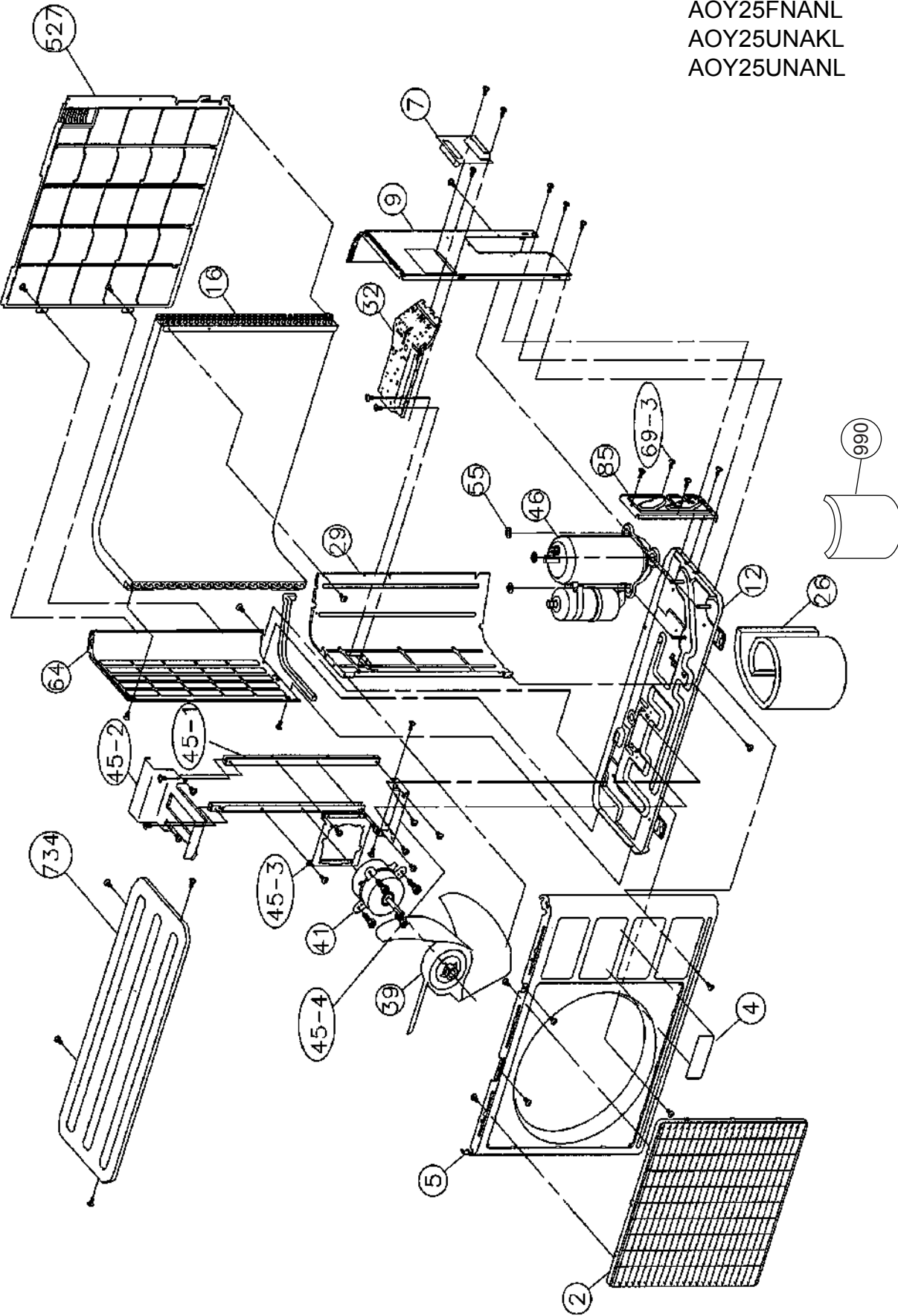
Models :
 AUY25FUAR
 AUY25UUAR



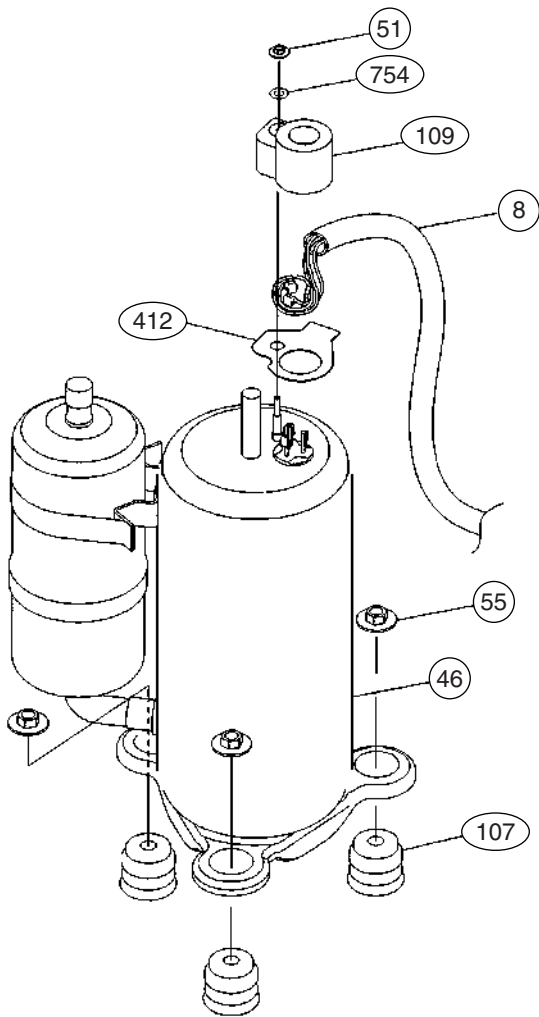
Models :
AUY25FUAR
AUY25UUAR



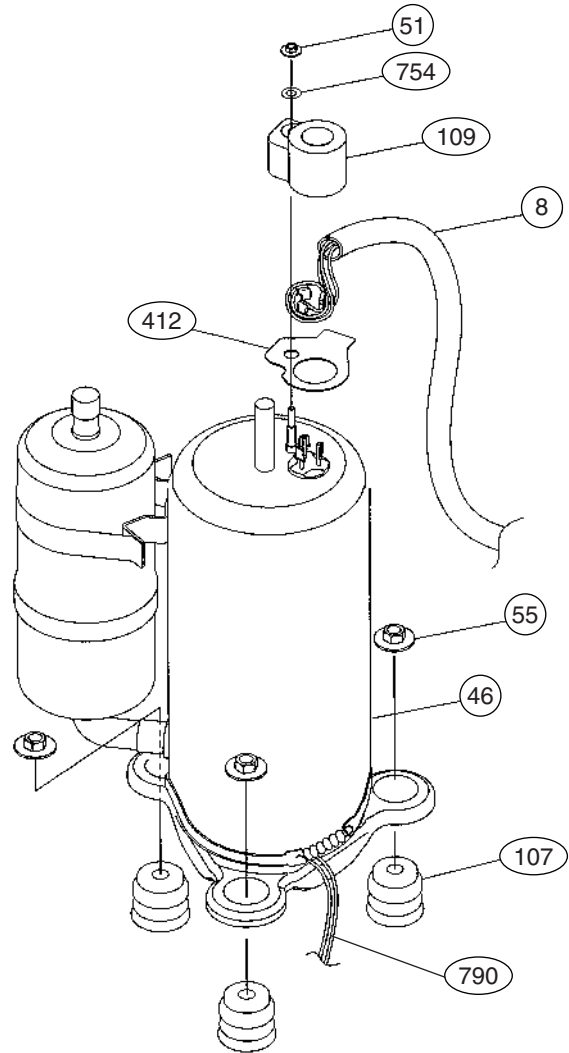
Models :
AOY25FNAKL
AOY25FNANL
AOY25UNAKL
AOY25UNANL



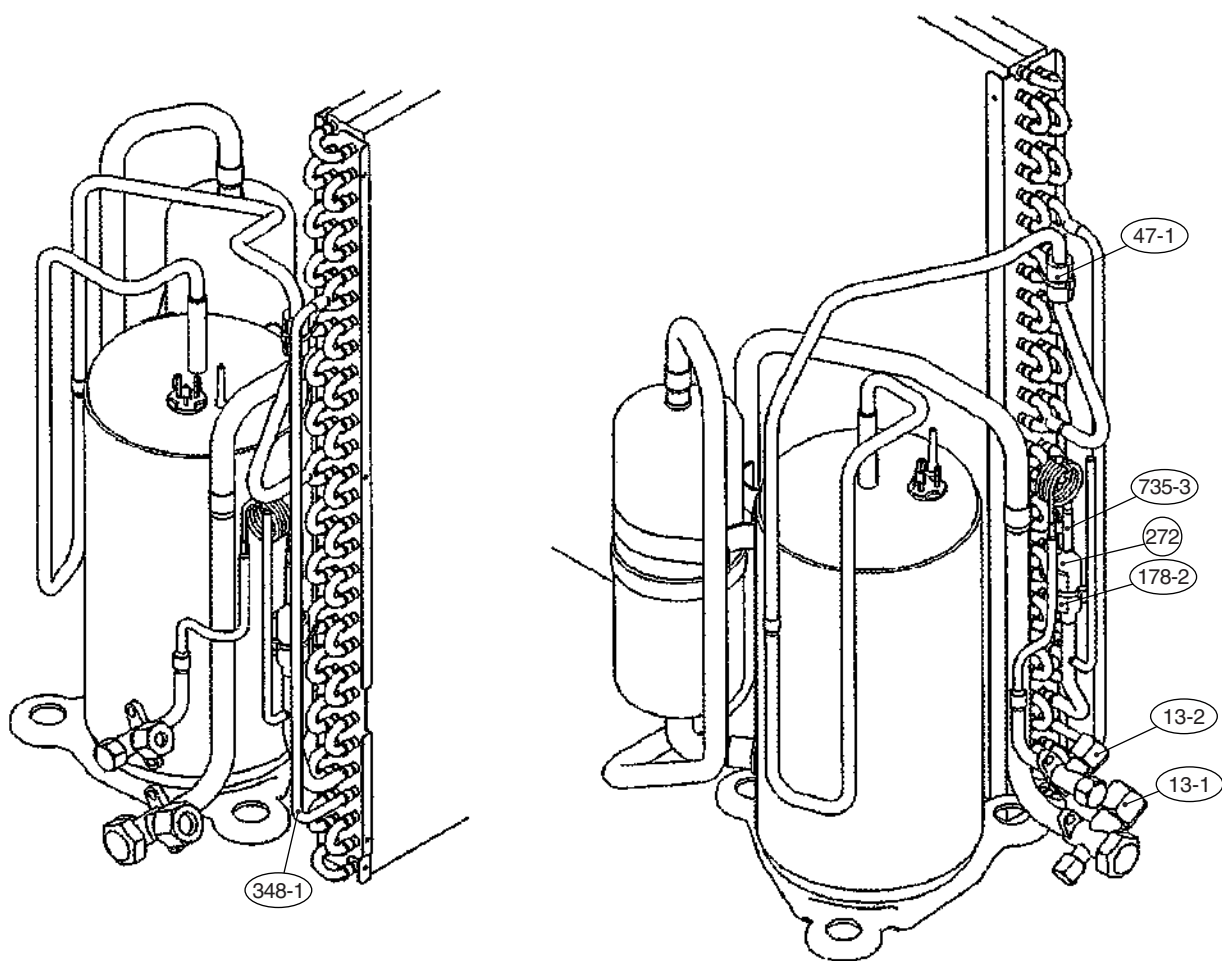
Models :
AOY25FNAKL
AOY25FNANL



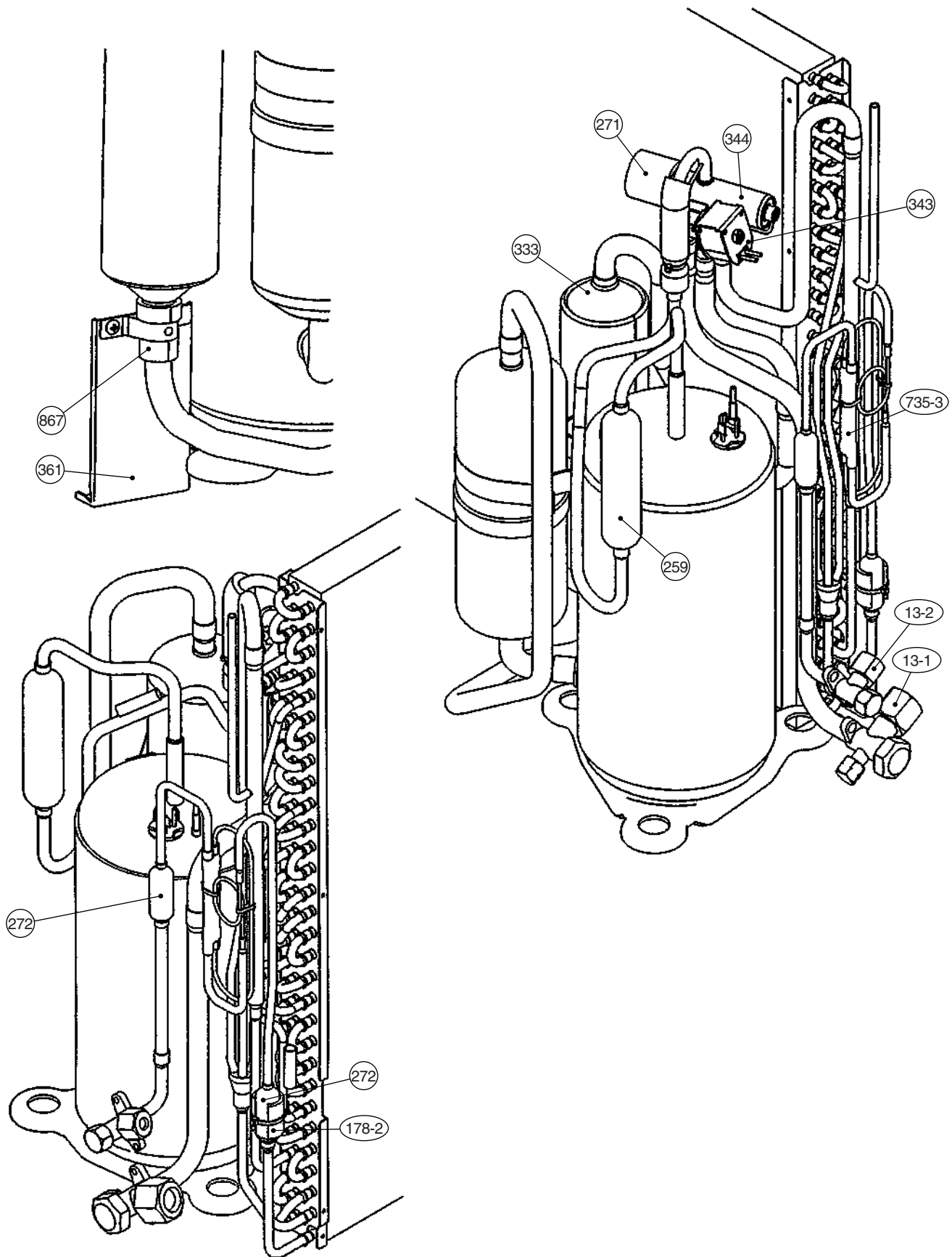
Models :
AOY25UNAKL
AOY25UNANL



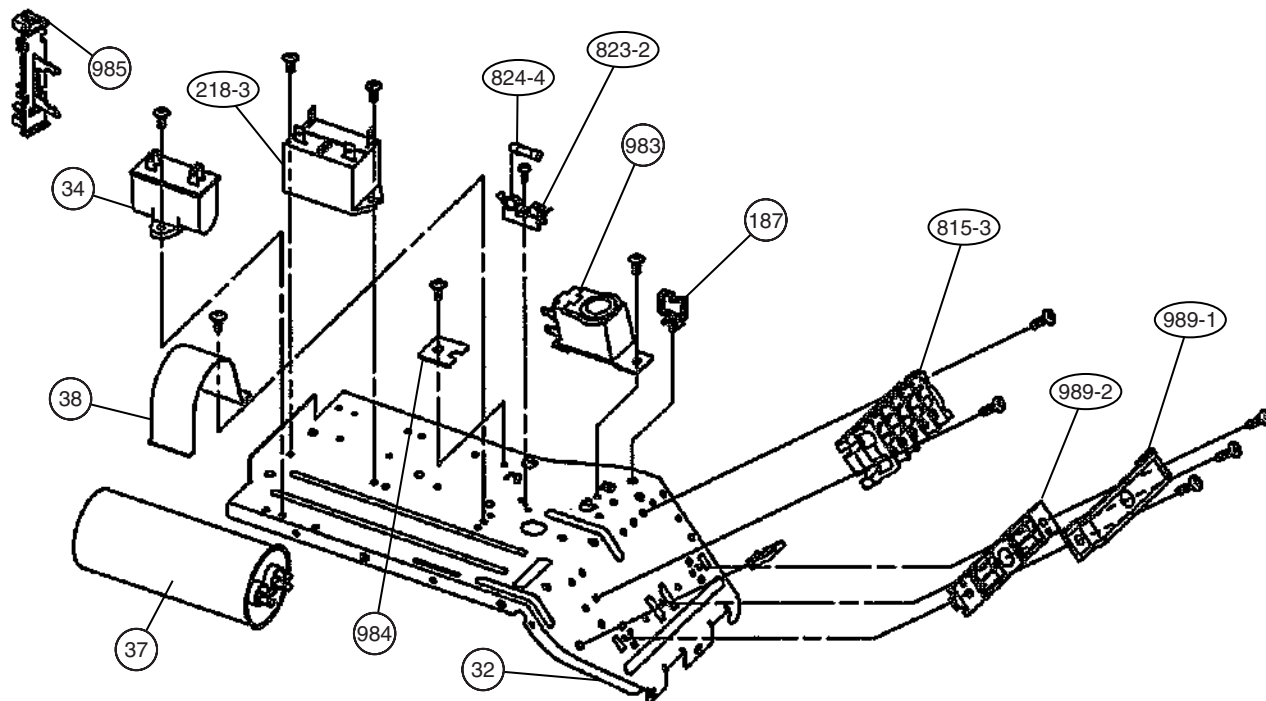
Models :
AOY25FNAKL
AOY25FNANL



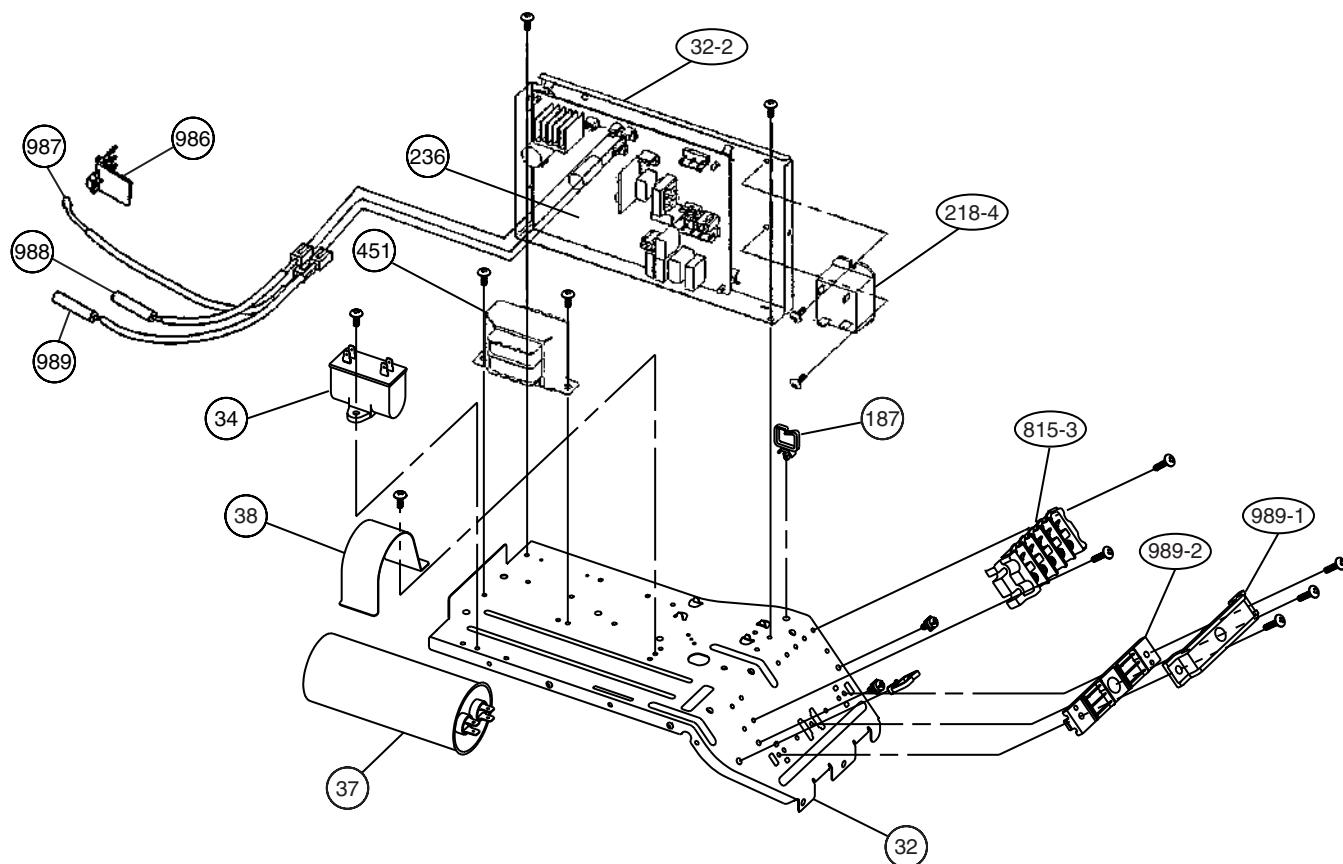
Models :
AOY25UNAKL
AOY25UNANL



Models :
AOY25FNAKL
AOY25FNANL



Models :
AOY25UNAKL
AOY25UNANL



PARTS LIST

INDOOR UNIT

Ref. No.	Description	Part No.	Ord. Q'ty	Ref. No.	Description	Part No.	Ord. Q'ty
		AUY25FUAR AUY25UUAR				AUY25FUAR AUY25UUAR	
34	Capacitor (Fan Motor)	9900230029		474	Turbo Fan Assy	9362810012	
61	Decoration Plate	9362787000		476-2	Special Washer	9362756006	
71	Grille Hook Holder	9362782005		477	Bellmouth (B)	9362774000	
93	Filter	9362766005		479	Float Switch	9703285004	
117-3	Hex. Nut w/Spring Washer	301721180114		482	Pump Unit	9703125010	
122	Louver Support Holder	9362799003		484	Hook	9362736008	
127	Drain Hose	9365074008		487	Grille Hinge Wire	9362754002	
138	Separate Wall	9362793001		488	Drain Pan Plug	313005174654	
143-1	Clamp NK-3N	313361274700		514	Control Box Cover	9362763004	
143-3	Clamp NK-9N	313209399700		522	Joint Gear	9362772006	
146-1	Evaporator-A Assy	9373799030		541	Terminal Plate	9363642001	
146-2	Evaporator-B Assy	9373800033		542	Panel Base	9362759014	
155	Special Nut M6	9307615016		543	Panel Frame Holder	9362761017	
160	Drain Pan Assy	9362804004		544	Panel Base Holder	9362760010	
164	Fan Motor Assy-In	9601558019		545	Panel Frame	9362758017	
168	Cabinet-E	9362735001		563	Insulation (Inner Box)	9362797009	
184-1	Thermostat Spring-A	313728262708		565	Evaporator Holder Assy	9362802024	
187	Clamp No.1219	313361271706		628	Locking Spacer-B	313005446558	
195	Clamp SKB-100	313361275805		629	EMI Filter	0400247074	
197	Wind Guide Board	9373444015		690	Joint-A	9362773003	
223	Control Box	9362762007		692	Joint Shaft	9362771009	
226	Motor Gear	9362764001		705	Louver	9362769013	
234	Thermistor Assy-Room	9703299025		710	Intake Grille	9362767019	
235	Thermistor Assy-Pipe	9703297014		735	Distributor Assy	9371325040	
236	Controller PCB Assy (for FUAR) K01AL-0401WSE-C1	9704557704		777-1	Grille Hook-A	9362779012	
236	Controller PCB Assy (for UUAR) K01AL-0400HSE-C1	9704557698		777-2	Grille Hook-B	9362778015	
240	Remote Control Unit (for FUAR)	9372266069		798	Pump Hook Bracket	9362753005	
240	Remote Control Unit (for UUAR)	9372266052		803	Cabinet-D	9362792004	
244	Pipe Cover	9362748001		814	Cabinet-C	9362791007	
253-A	Wire Assy (Remote)	9372714010		815-1	Terminal-3P	9306489069	
337-1	Reinforcement (Eva.)-A	9362749008		815-2	Terminal-3P	9703345012	
337-2	Reinforcement (Eva.)-B	9362750004		824-3	Fuse	0600222512	
338	Motor Holder	9362765008		834-1	Wire Cover-A	9362789004	
381	Locking Spacer	313209391506		834-2	Wire Cover-B	9362788007	
457	Reinforcement (Drain Pan)	9362757003		835	Cushion Rubber (Pump)	9362777001	
460-1	Pump Cover-A	9362775007		847	Louver Supporter	9362770019	
460-2	Pump Cover-B	9362776004		858	Grille Spring	9362755009	
462	Top Cover Plate Assy	9362806022		875	Filter PCB Assy (for FUAR)	9704561107	
464	Cabinet-A Assy	9362807012		875	Filter PCB Assy (for UUAR)	9704561091	
465	Cabinet-B Assy	9362808019		876-2	Step Motor	9360307019	
467	Drain Port	9362786003		903	Rubber (Vibration-proof) A	9364891002	
468	Special Nut-A (Large)	313005446653		904	Rubber (Vibration-proof) B	9364892009	
469	Special Nut-B (Small)	313005446759		982-1	Cord Clamp	9356857009	
472-1	Grille Reinforcement-A	9362738002					
472-2	Grille Reinforcement-B	9362739009					
472-3	Grille Reinforcement-C	9362740005					
472-4	Grille Reinforcement-D	9362741002					
472-5	Grille Reinforcement-E	9362742009					

OUTDOOR UNIT

Ref. No.	Description	Part No.	Ord. Q'ty
		AOY25FNAKL	
2	Fan Guard	9371187013	
4	Emblem-Rear	9351355005	
5	Front Panel Ptd	9371924014	
7	Connector Cover (Cabinet)	9366398004	
8	Wire Assy (Comp)	9372334010	
9	Side Panel R Ptd	9371927015	
12	Base Assy, Ptd	9371920016	
13-1	3-Way Valve Assy	9372205013	
13-2	2-Way Valve Assy	9372204023	
16	Condenser Assy	9372181027	
26	Compressor Cover A	9372327012	
29	Separate Wall	9371933016	
32	Control Box	9371935010	
34	Capacitor, Plastic	9900270049	
37	Running Capacitor	9703107023	
38	Capacitor Clamp Metal	313791061807	
39	Propeller Fan Assy	9366378013	
41	Motor Induct	9601671046	
45-1	Motor Bracket	9371929019	
45-2	Motor Bracket-Top	9371931012	
45-3	Motor Bracket Ctr	9371930015	
45-4	Motor Bracket Bottom	9371932019	
46	Compressor Assy	9372558010	
47-1	Rubber (Discharge Pipe)	313194159807	
51	Special Nut M5	9300301015	
55	Special Nut M8	9355091008	
64	Side Panel L Ptd	9371926018	
69-3	Bolt, Hex. Socket	0700145148	
85	Valve Plate Ptd	9371928012	
107	Rubber Seat-A	9351049010	
109	Terminal Cover (Comp)	9371511016	
178-2	Capillary Holder Rubber	313394274808	
187	Clip (Cable)	9352715006	
218-3	Relay	9900074012	
272	Strainer	9369287008	
348-1	Outlet Pipe (Cond)	9372190029	
412	Cover Gasket (Comp.)	9371512013	
527	Protective Net	9371934013	
734	Top Panel	9371925011	
735-3	Capillary Assy	9372197059	
754	Terminal Gask. Washer	9351053017	
815-3	Terminal-5P	9900203023	
823-2	Fuse Holder	0501456016	
824-4	Fuse	0600376086	
983	Outdoor Thermostat	9352553004	
984	Bracket (switch)	313986353607	
985	Bracket (thermostat)	9372643013	
989-1	Double Clamp U	9374175017	
989-2	Double Clamp L	9374176014	

Ref. No.	Description	Part No.	Ord. Q'ty
		AOY25UNAKL	
2	Fan Guard	9371187013	
4	Emblem-Rear	9351355005	
5	Front Panel Ptd	9371924014	
7	Connector Cover (Cabinet)	9366398004	
8	Wire Assy (Comp)	9372334010	
9	Side Panel R Ptd	9371927015	
12	Base Assy, Ptd	9371920016	
13-1	3-Way Valve Assy	9372205013	
13-2	2-Way Valve Assy	9372204023	
16	Condenser Assy	9372181010	
26	Compressor Cover A	9372327012	
29	Separate Wall	9371933023	
32	Control Box	9371935010	
32-2	Control Box B	9371936017	
34	Capacitor, Plastic	9900270049	
37	Running Capacitor	9703107023	
38	Capacitor Clamp Metal	313791061807	
39	Propeller Fan Assy	9366378013	
41	Motor Induct	9601671046	
45-1	Motor Bracket	9371929019	
45-2	Motor Bracket-Top	9371931012	
45-3	Motor Bracket Ctr	9371930015	
45-4	Motor Bracket Bottom	9371932019	
46	Compressor Assy	9372558010	
51	Special Nut M5	9300301015	
55	Special Nut M8	9355091008	
64	Side Panel L Ptd	9371926018	
69-3	Bolt, Hex. Socket	0700145148	
85	Valve Plate Ptd	9371928012	
107	Rubber Seat-A	9351049010	
109	Terminal Cover (Comp)	9371511016	
178-2	Capillary Holder Rubber	313394274808	
187	Clip (Cable)	9352715006	
218-4	Relay	9900262013	
236	PCB Assy	9704299062	
259	Muffler	9372369012	
271	4-Way Valve Rubber	313728251908	
272	Strainer	9369287008	
333	Accumulator	9368391003	
343	Solenoid	9900165024	
344	4-Way Valve	9900163013	
361	Accum Support Assy	9372252017	
412	Cover Gasket (Comp.)	9371512013	
451	TRANSFORMER	9900039011	
527	Protective Net	9371934013	
734	Top Panel	9371925011	
735-3	Capillary Assy	9372197288	
754	Terminal Gask. Washer	9351053017	
790	Belt Heater	9361140165	
815-3	Terminal-5P	9900203023	
867	Accumulator Holder Rubber	9354022010	
986	Bracket (thermo)	9373154013	
987	Outdoor Temp thermistor	9900037031	
988	Discharge Temp thermistor	9900038014	
989	Heat Exchanger thermistor	9900043032	
989-1	Double Clamp U	9374175017	
989-2	Double Clamp L	9374176014	



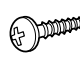


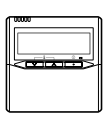
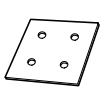

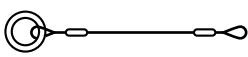
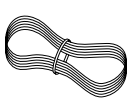
OUTDOOR UNIT

Ref. No.	Description	Part No.	Ord. Q'ty
		AOY25FNANL	
2	Fan Guard	9371187013	
4	Emblem-Rear	9351355005	
5	Front Panel Ptd	9371924014	
7	Connector Cover (Cabinet)	9366398004	
8	Wire Assy (Comp)	9314792007	
9	Side Panel R Ptd	9371927015	
12	Base Assy, Ptd	9371920016	
13-1	3-Way Valve Assy	9314674013	
13-2	2-Way Valve Assy	9314680014	
16	Condenser Assy	9314476013	
26	Compressor Cover A	9314750014	
29	Separate Wall	9371933016	
32	Control Box	9371935010	
34	Capacitor, Plastic	9900089108	
37	Running Capacitor	9307588204	
38	Capacitor Clamp Metal	313791061807	
39	Propeller Fan Assy	9314812019	
41	Motor Induct	9602277018	
45-1	Motor Bracket	9371929019	
45-2	Motor Bracket-Top	9371931012	
45-3	Motor Bracket Ctr	9371930015	
45-4	Motor Bracket Bottom	9371932019	
46	Compressor Assy	9372558010	
47-1	Rubber (Discharge Pipe)	313194159807	
51	Special Nut M5	9300301015	
55	Special Nut M8	9355091008	
64	Side Panel L Ptd	9371926018	
69-3	Bolt, Hex. Socket	0700145148	
85	Valve Plate Ptd	9371928012	
107	Rubber Seat-A	9351049010	
109	Terminal Cover (Comp)	9371511016	
178-2	Capillary Holder Rubber	313394274808	
187	Clip (Cable)	9352715006	
218-3	Relay	9900074012	
272	Strainer	9369287008	
348-1	Outlet Pipe (Cond)	9372190029	
412	Cover Gasket (Comp.)	9371512013	
527	Protective Net	9371934013	
734	Top Panel	9371925011	
735-3	Capillary Assy	9372197387	
754	Terminal Gask. Washer	9351053017	
815-3	Terminal-5P	9900203023	
823-2	Fuse Holder	0501456016	
824-4	Fuse	0600376016	
983	Outdoor Thermostat	9352553004	
984	Bracket (switch)	313986353607	
985	Bracket (thermostat)	9372643013	
989-1	Cord Clamp A	9359822011	
989-2	Cord Clamp B	9359823018	
990	Compressor Cover B	9314750021	

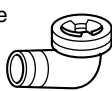
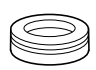
Ref. No.	Description	Part No.	Ord. Q'ty
		AOY25UNANL	
2	Fan Guard	9371187013	
4	Emblem-Rear	9351355005	
5	Front Panel Ptd	9371924014	
7	Connector Cover (Cabinet)	9366398004	
8	Wire Assy (Comp)	9314792007	
9	Side Panel R Ptd	9371927015	
12	Base Assy, Ptd	9371920016	
13-1	3-Way Valve Assy	9314674013	
13-2	2-Way Valve Assy	9314680014	
16	Condenser Assy	9314475023	
26	Compressor Cover A	9314750014	
29	Separate Wall	9371933023	
32	Control Box	9371935010	
32-2	Control Box B	9371936017	
34	Capacitor, Plastic	9900089108	
37	Running Capacitor	9307588204	
38	Capacitor Clamp Metal	313791061807	
39	Propeller Fan Assy	9314812019	
41	Motor Induct	9602277018	
45-1	Motor Bracket	9371929019	
45-2	Motor Bracket-Top	9371931012	
45-3	Motor Bracket Ctr	9371930015	
45-4	Motor Bracket Bottom	9371932019	
46	Compressor Assy	9372558010	
51	Special Nut M5	9300301015	
55	Special Nut M8	9355091008	
64	Side Panel L Ptd	9371926018	
69-3	Bolt, Hex. Socket	0700145148	
85	Valve Plate Ptd	9371928012	
107	Rubber Seat-A	9351049010	
109	Terminal Cover (Comp)	9371511016	
178-2	Capillary Holder Rubber	313394274808	
187	Clip (Cable)	9352715006	
218-4	Relay	9900262013	
236	PCB Assy	9704299062	
259	Muffler	9372369043	
272	Strainer	9369287008	
333	Accumulator	9368391003	
343	Solenoid	9900165024	
344	4-Way Valve	9900163013	
361	Accum Support Assy	9372252017	
412	Cover Gasket (Comp.)	9371512013	
451	TRANSFORMER	9900039011	
527	Protective Net	9371934013	
734	Top Panel	9371925011	
735-3	Capillary Assy	9372197288	
754	Terminal Gask. Washer	9351053017	
790	Belt Heater	9361140165	
815-3	Terminal-5P	9900203023	
867	Accumulator Holder Rubber	9354022010	
986	Bracket (thermo)	9373154013	
987	Outdoor Temp thermistor	9900037031	
988	Discharge Temp thermistor	9900038014	
989	Heat Exchanger thermistor	9900043032	
989-1	Cord Clamp A	9359822011	
989-2	Cord Clamp B	9359823018	
990	Compressor Cover B	9314750021	

STANDARD ACCESSORIES

INDOOR UNIT ACCESSORIES

Name and Shape	Part No.
Coupler heat insulation 	9350716029 } 9352766015 } 1 each
Binder 	313361275805 (Small)
Screw 	0700181108 For installing the remote controller
Special nut A (large flange) 	313005446653
Special nut B (small flange) 	313005446759
Remote control unit 	(Cooling model) 9372266069 (Cooling & Heating model) 9372266052
Template 	9363173000
Blower cover insulation 	9363265002
Hook wire 	9363168006
Remote controller cord 	9372714010

OUTDOOR UNIT ACCESSORIES

Name and Shape	Q'ty	Part No.	
		AOY25FNAKL AOY25FNANL	AOY25UNAKL AOY25UNANL
Drain pipe 	1	—	9303029015
Drain cap 	1	—	313166024302

0405G2610